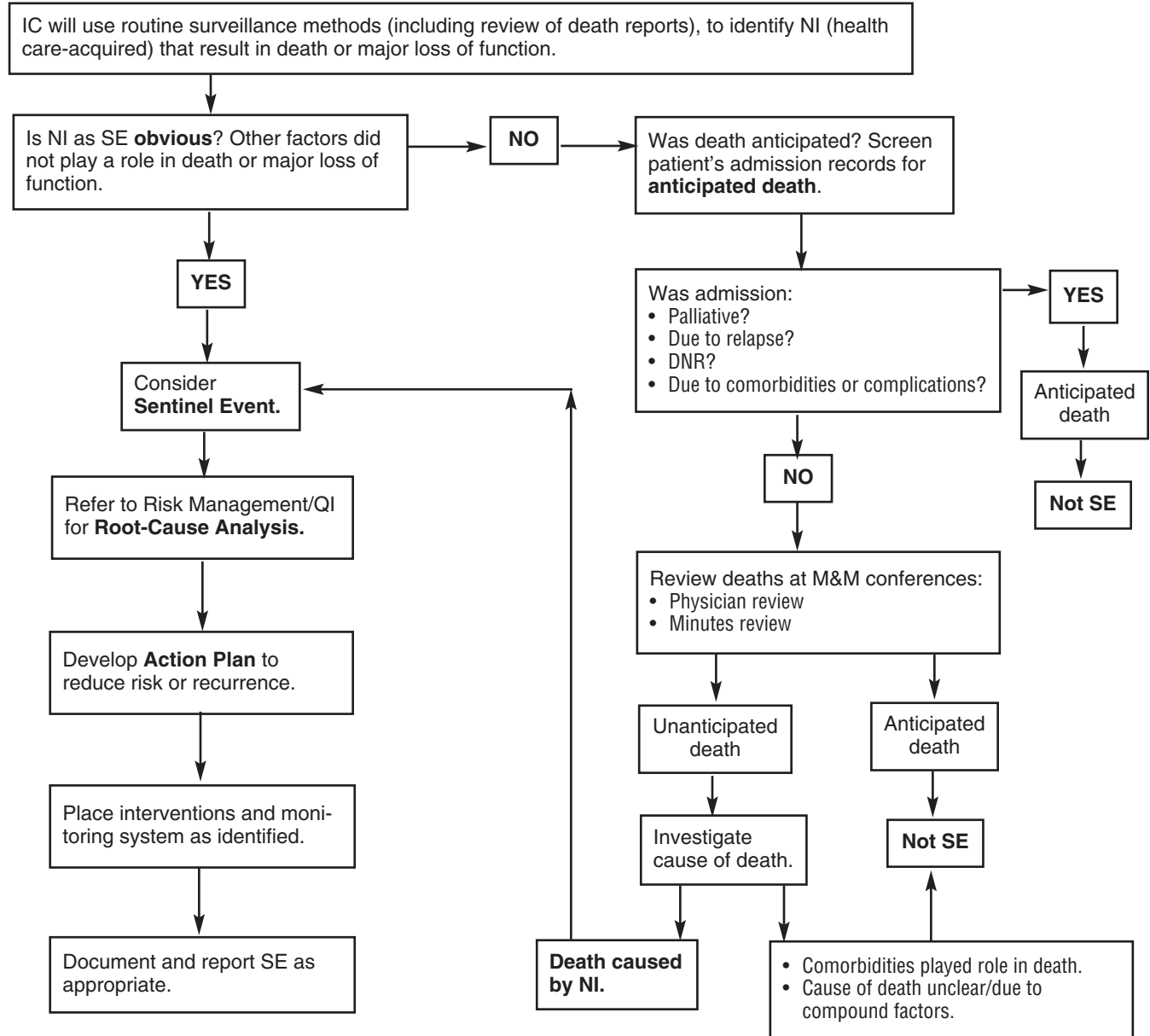


Algorithm for Investigation of Health Care-Associated (Nosocomial) Infections as Sentinel Events

Developed by Consensus of Infection Control Professionals from Consortium of Comprehensive Cancer Centers.*

Issue: Cancer centers are faced with multiple confounding factors in the assessment of health care-associated (nosocomial) infections (NI) as sentinel events (SE). Because of the high-risk populations of our institutions, these confounders must be considered when attributing death or major loss of function to NI.



Authors: C. Perego, MDACC; L. Roman, Fox Chase; B. Tegtmeier, City of Hope.

* Participants: MD Anderson Cancer Center, Fox Chase Cancer Center, City of Hope National Medical Center, Dana Farber Cancer Center, Roswell Park Cancer Institute, James Cancer Hospital, H. Lee Moffitt Cancer Center, University of Miami Sylvester Cancer Center, Kenneth Norris Cancer Hospital, Fred Hutchinson Cancer Research Center, Barnes Jewish Hospital.

Contact: Cheryl Perego, MPH, CIC, University of Texas MD Anderson Cancer Center, Houston, TX 77030. Phone: (713) 745-1800. E-mail: costing@mdanderson.org.